



**East Pye Solar Project**  
**Environmental Impact Assessment (EIA) Scoping Report**  
**Volume II - Part 1**  
**Date: January 2025**  
**PINS Reference: EN0110014**

**FIGURES 1.1 - 1.2**

## Contents

1.1	Scoping Boundary
1.2	Site Location Plan



**FIGURE 1.1**  
**SCOPING BOUNDARY**



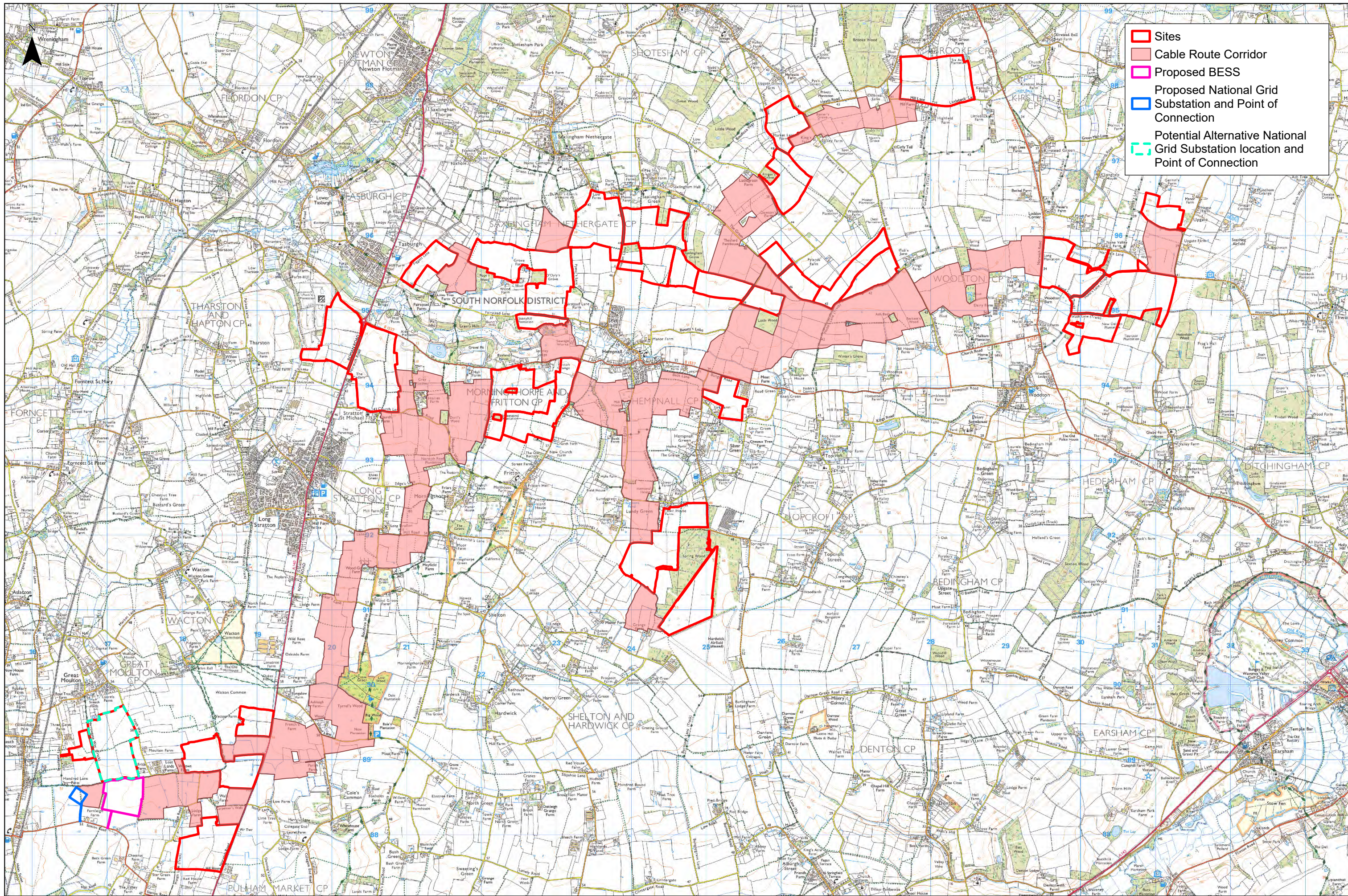
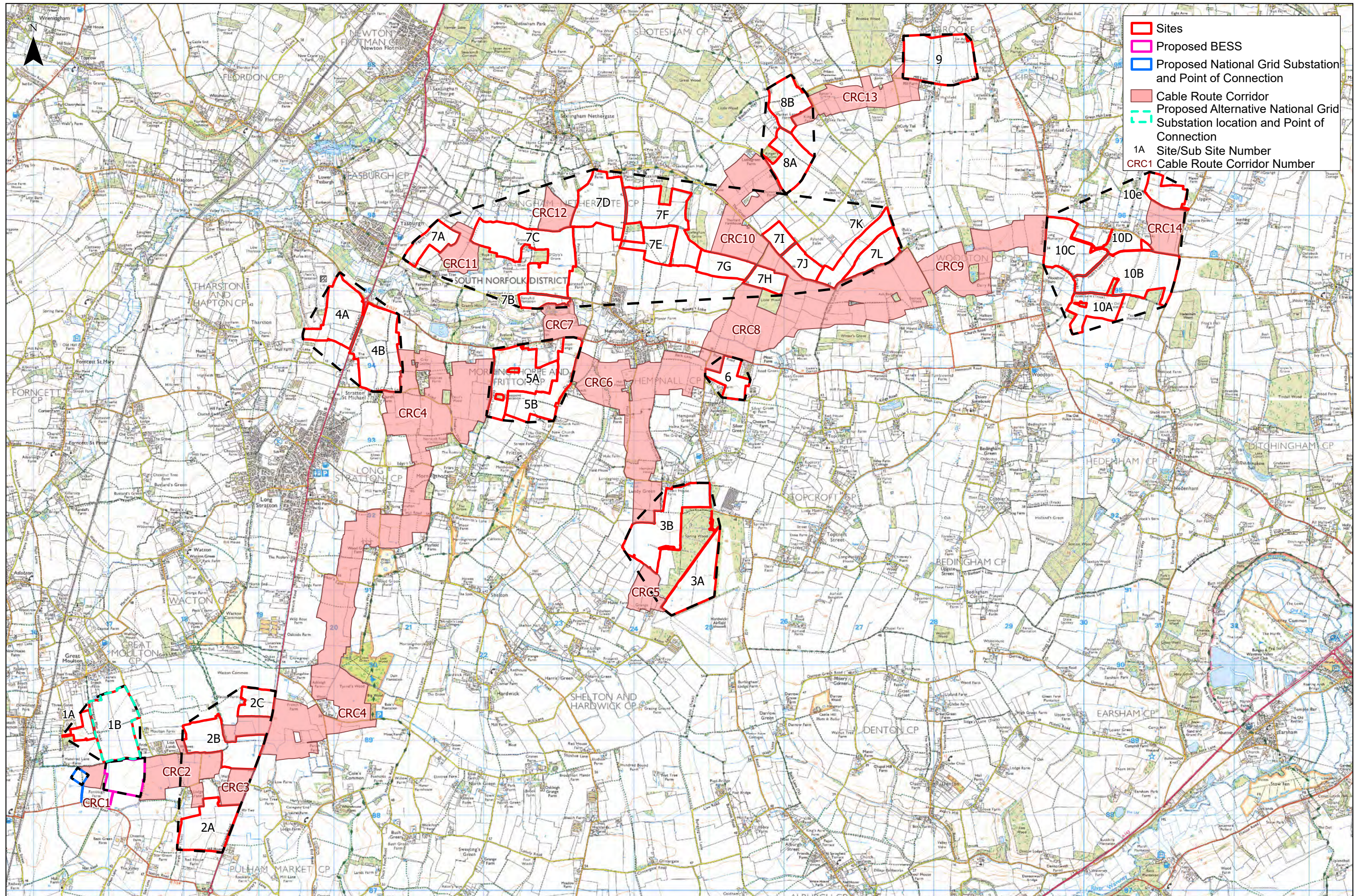




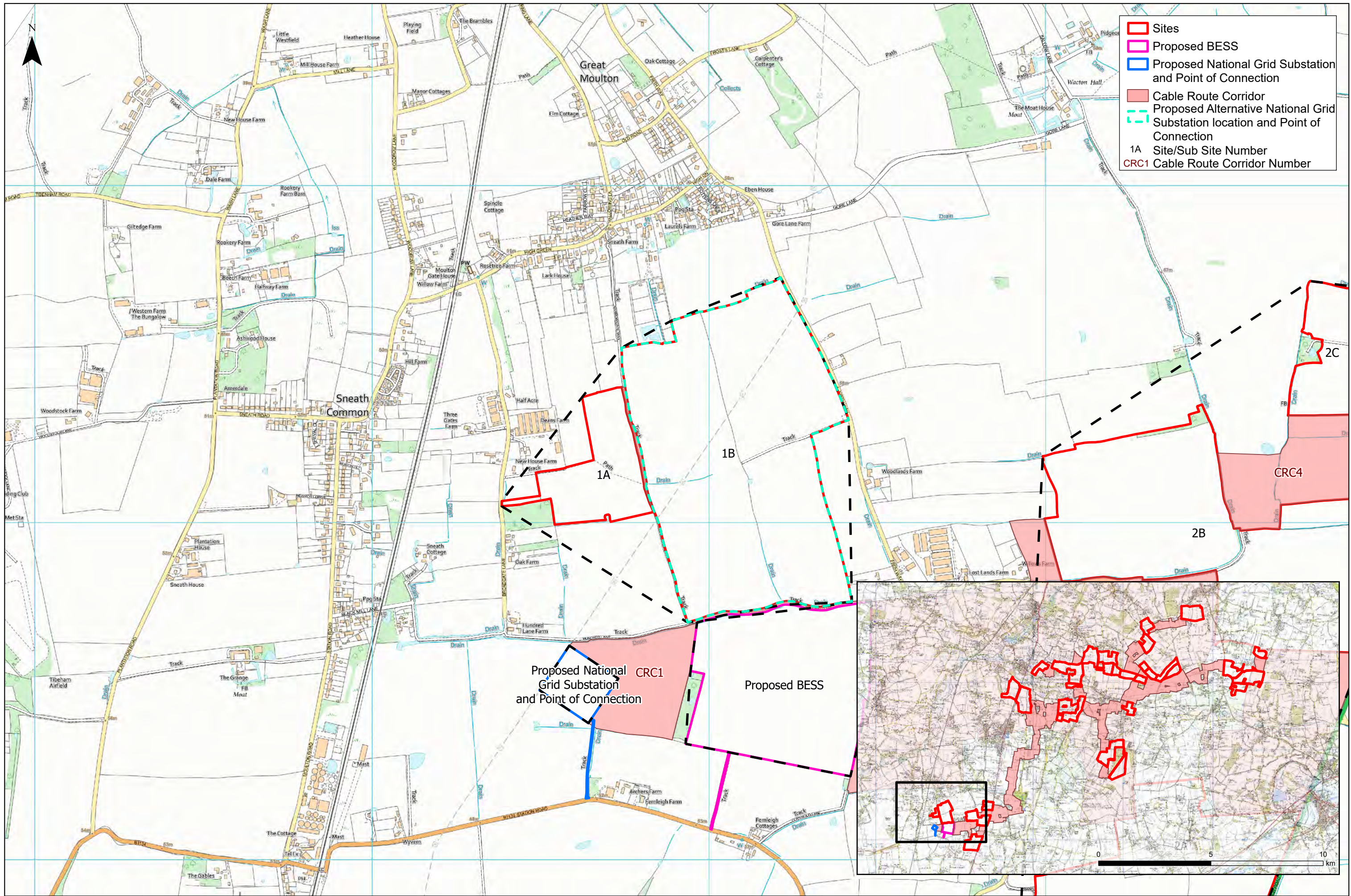


FIGURE 1.2  
SITE LOCATION PLAN

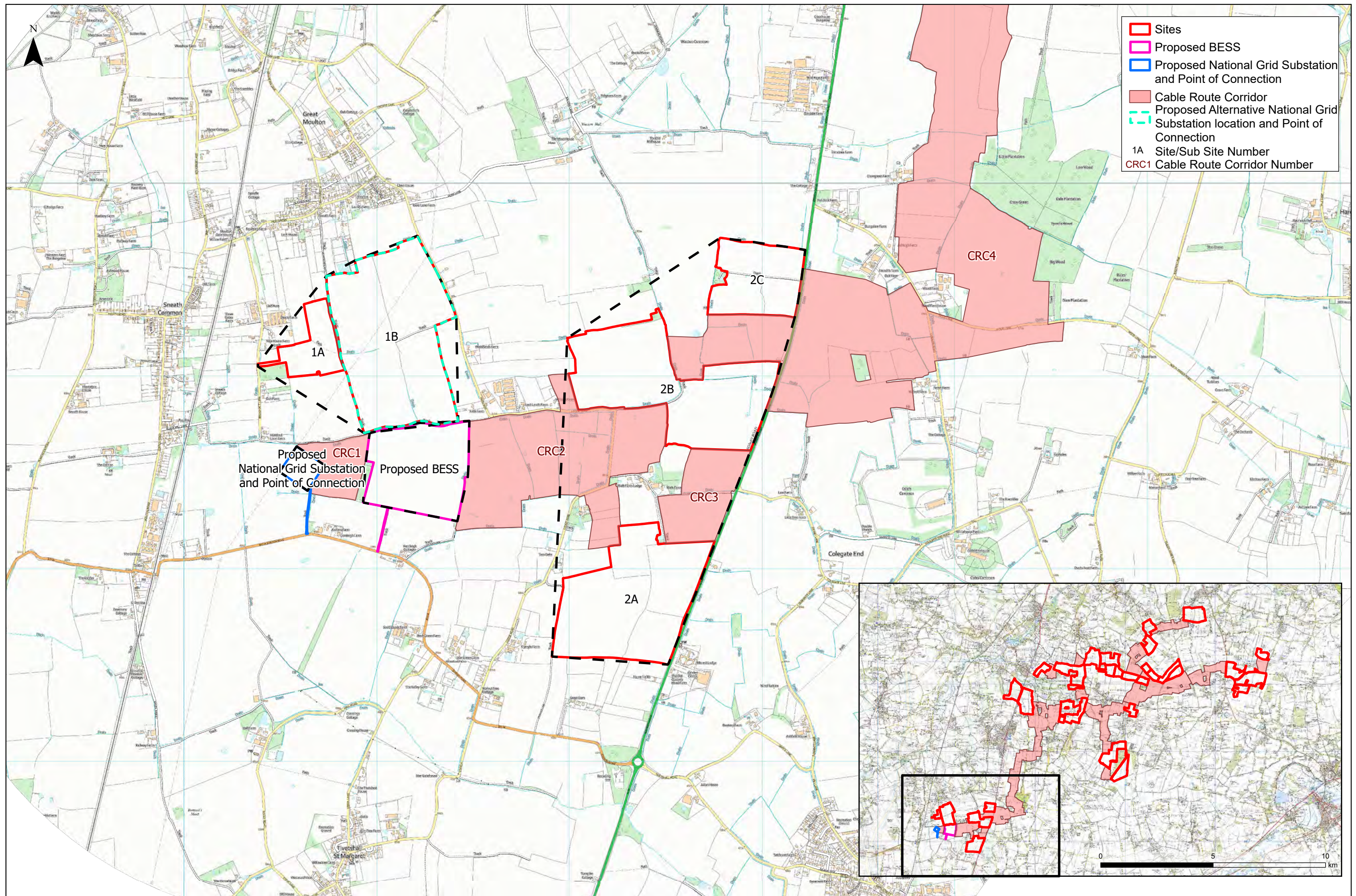




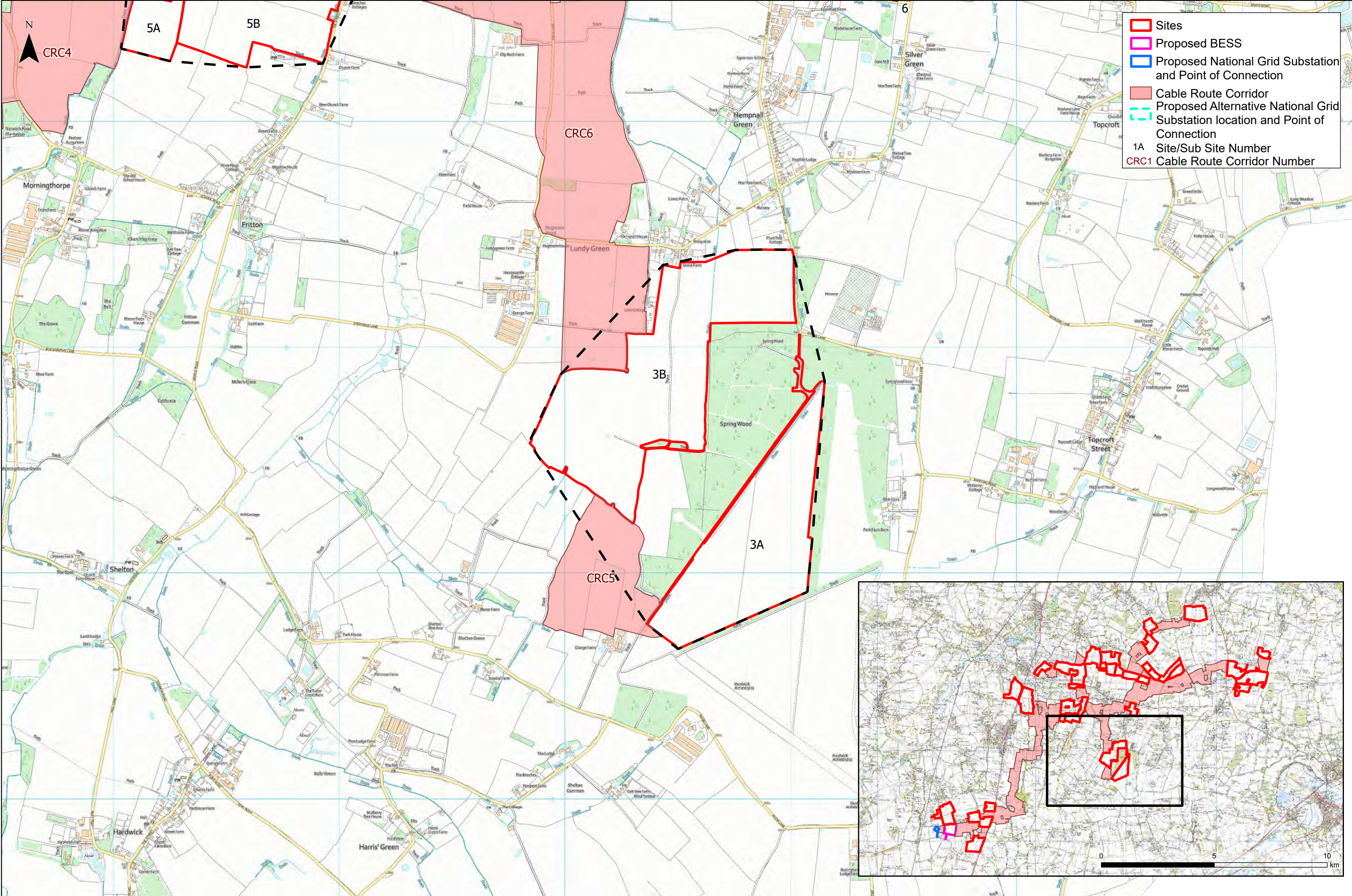












Sites

Proposed BESS

Proposed National Grid Substation and Point of Connection

Cable Route Corridor

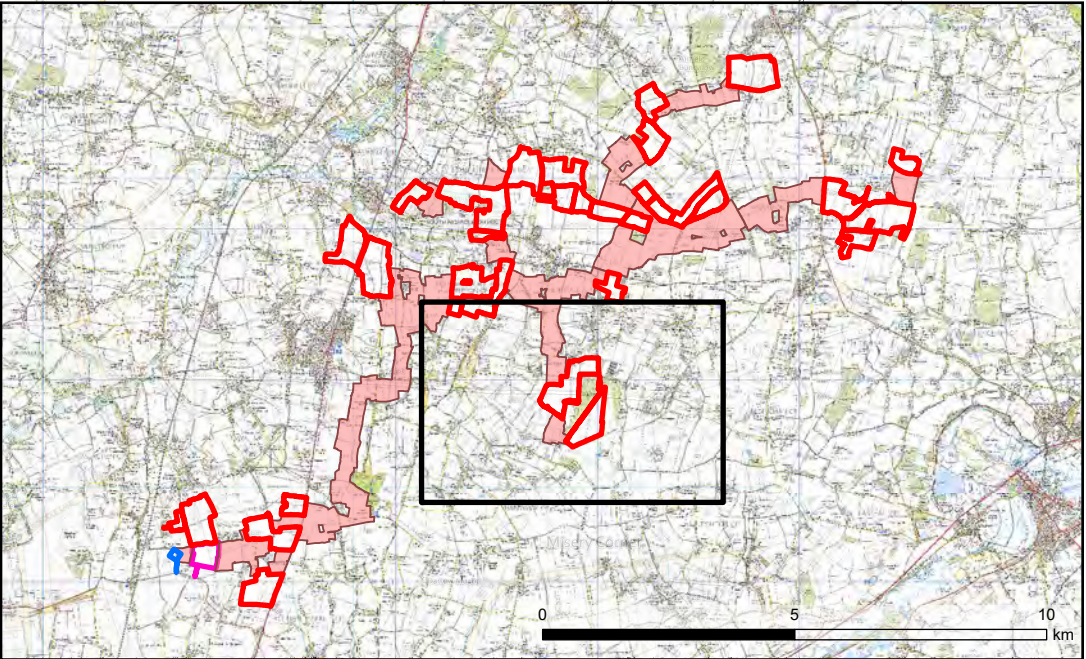
Proposed Alternative National Grid Substation location and Point of Connection

1A

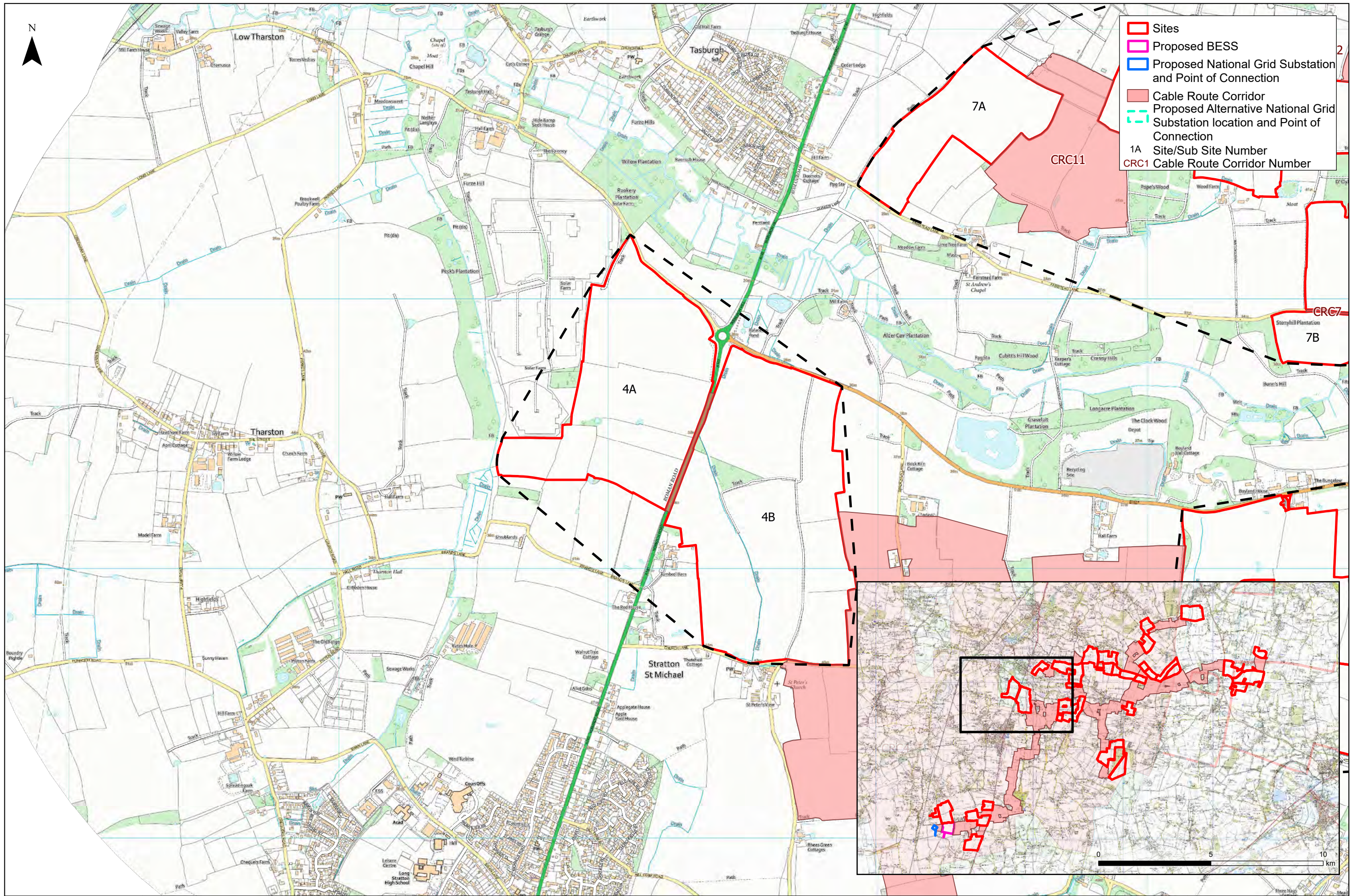
Site/Sub Site Number

CRC1

Cable Route Corridor Number



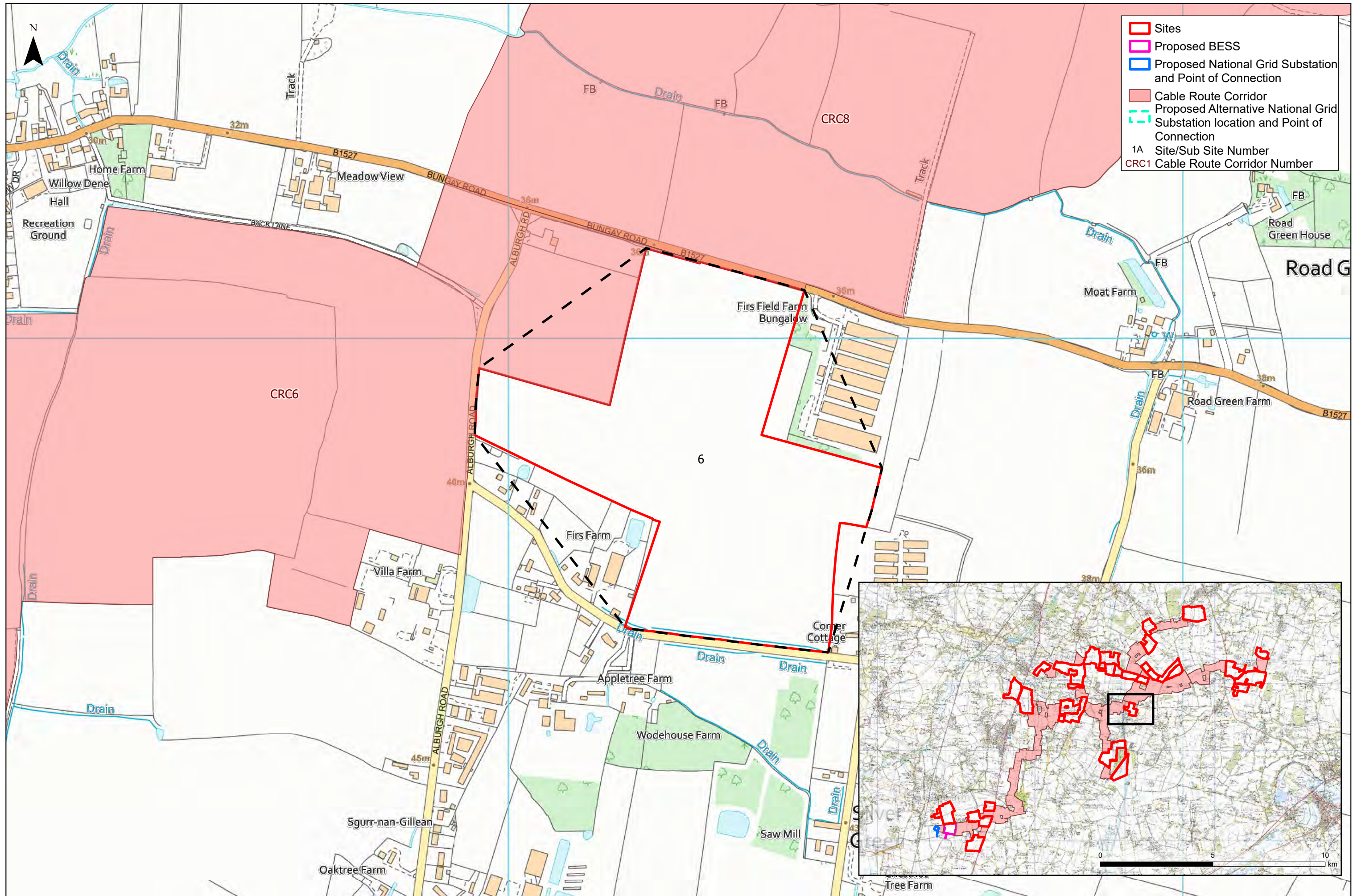




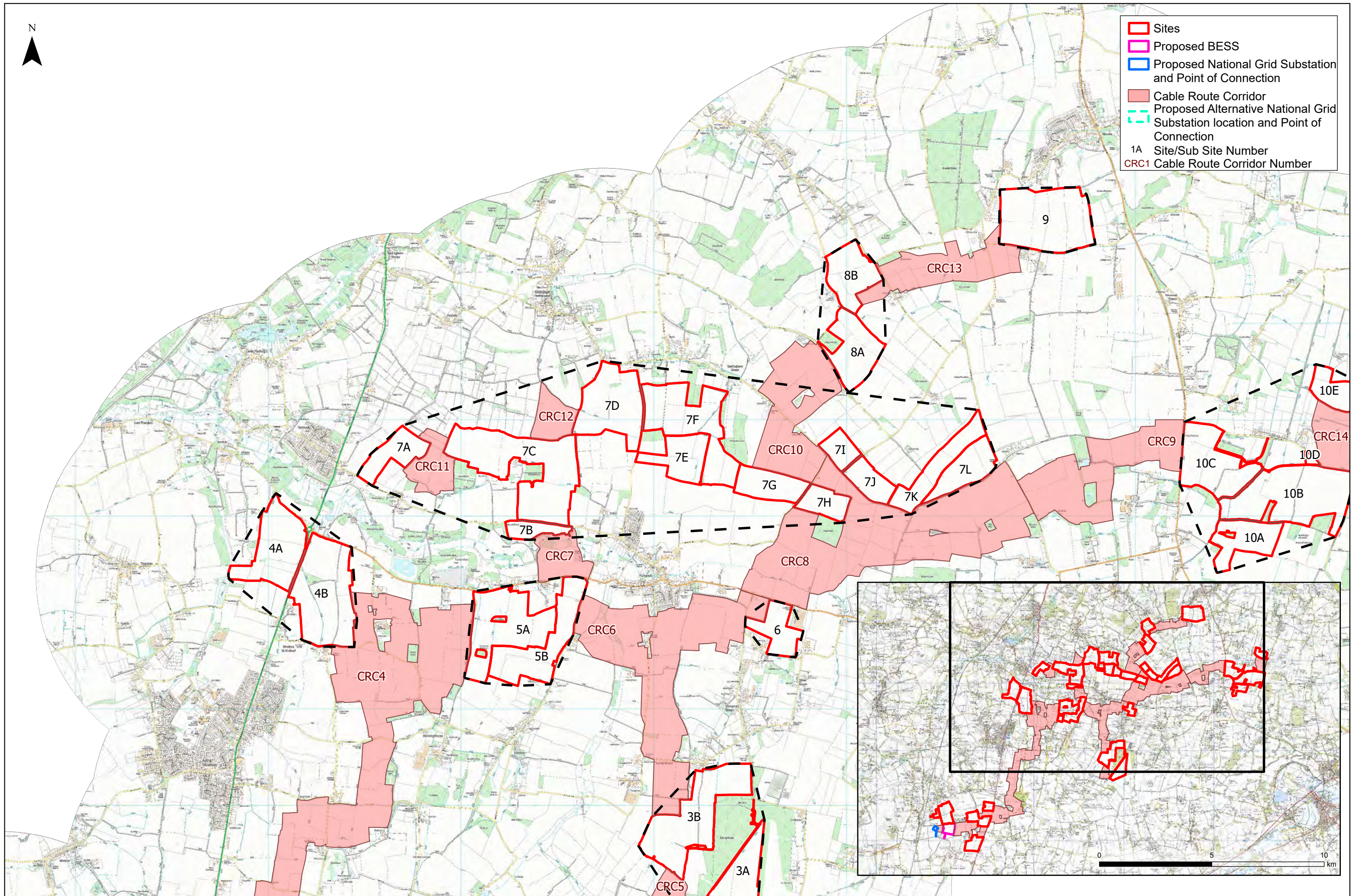




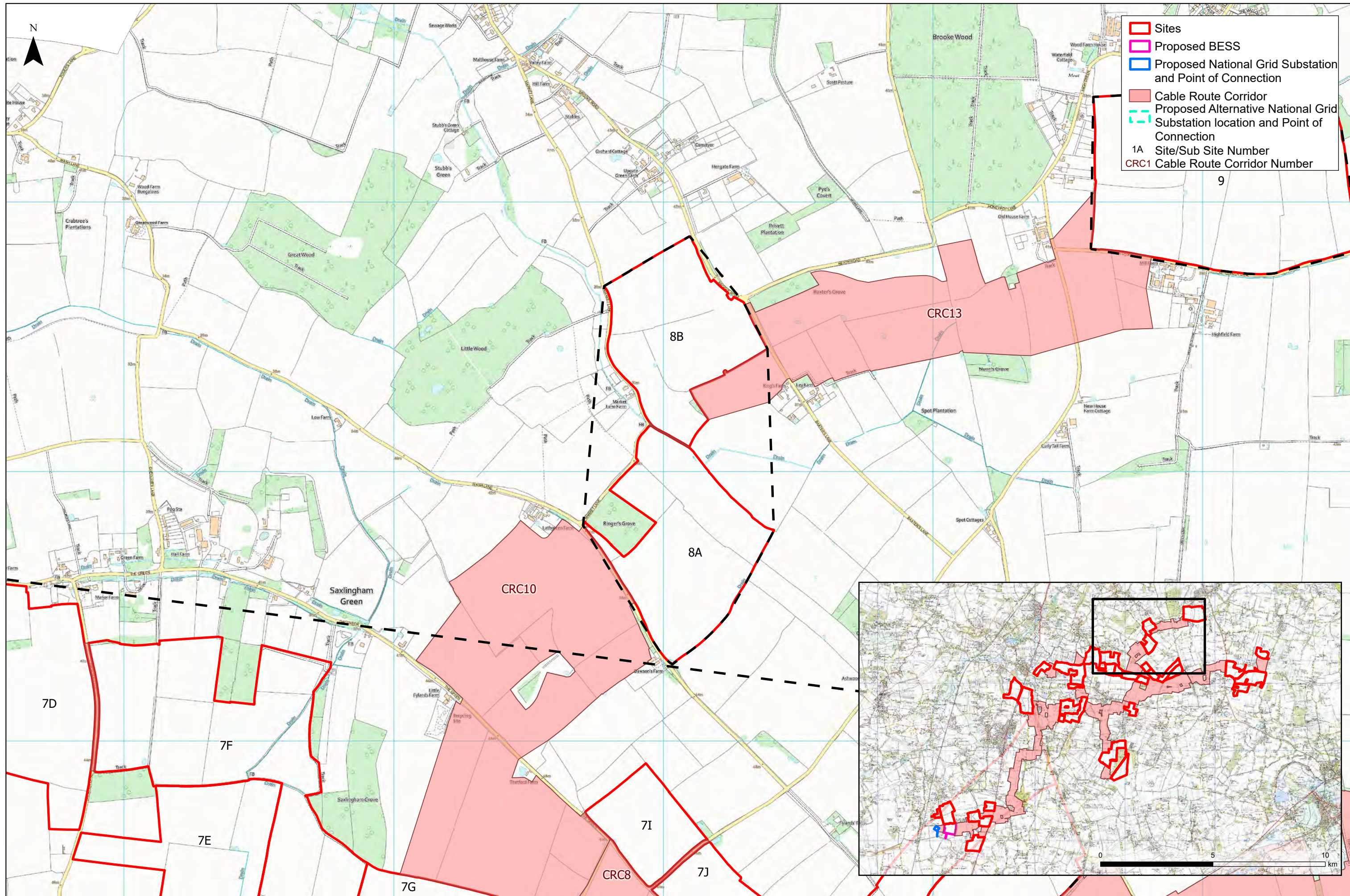




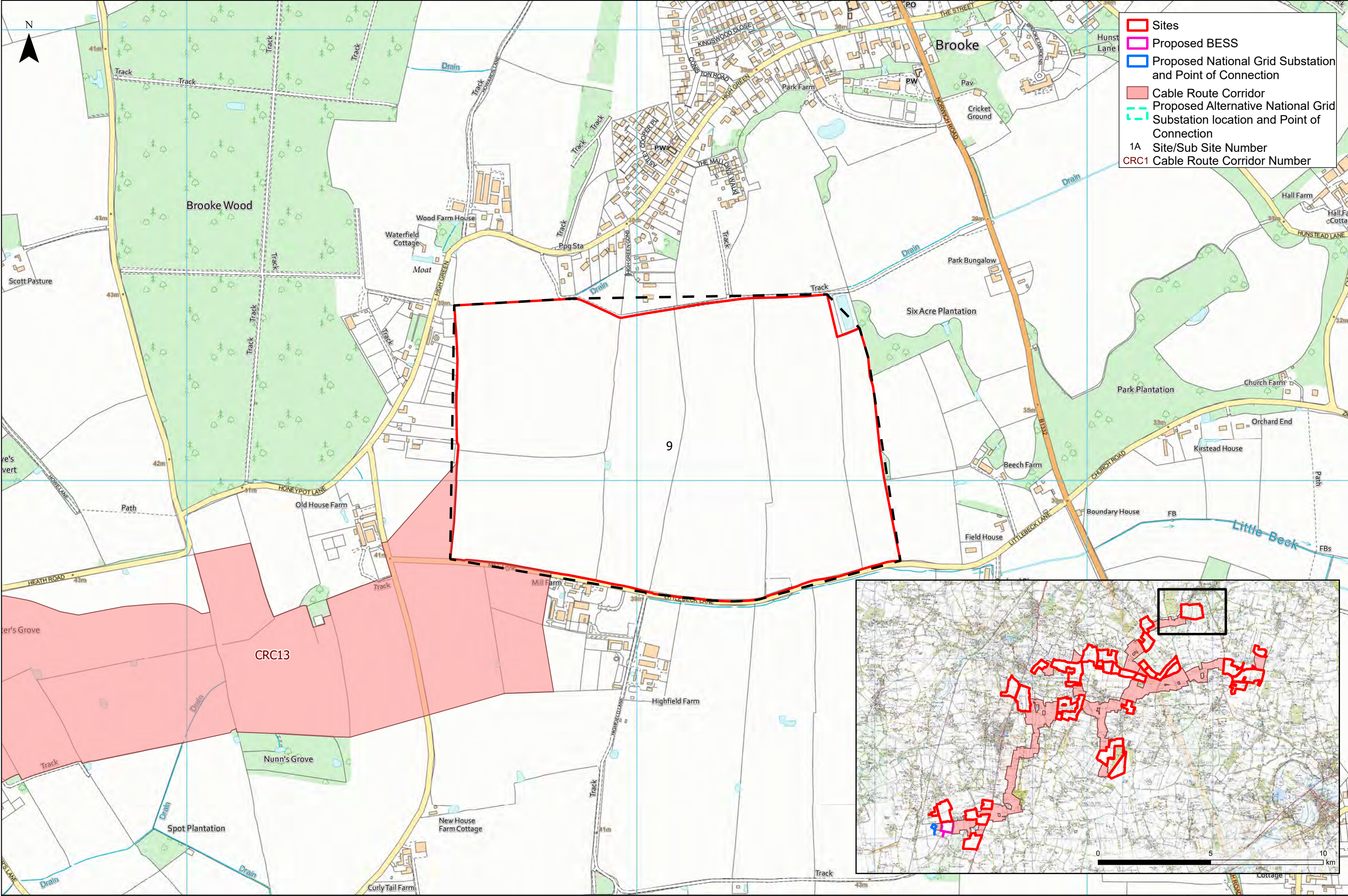




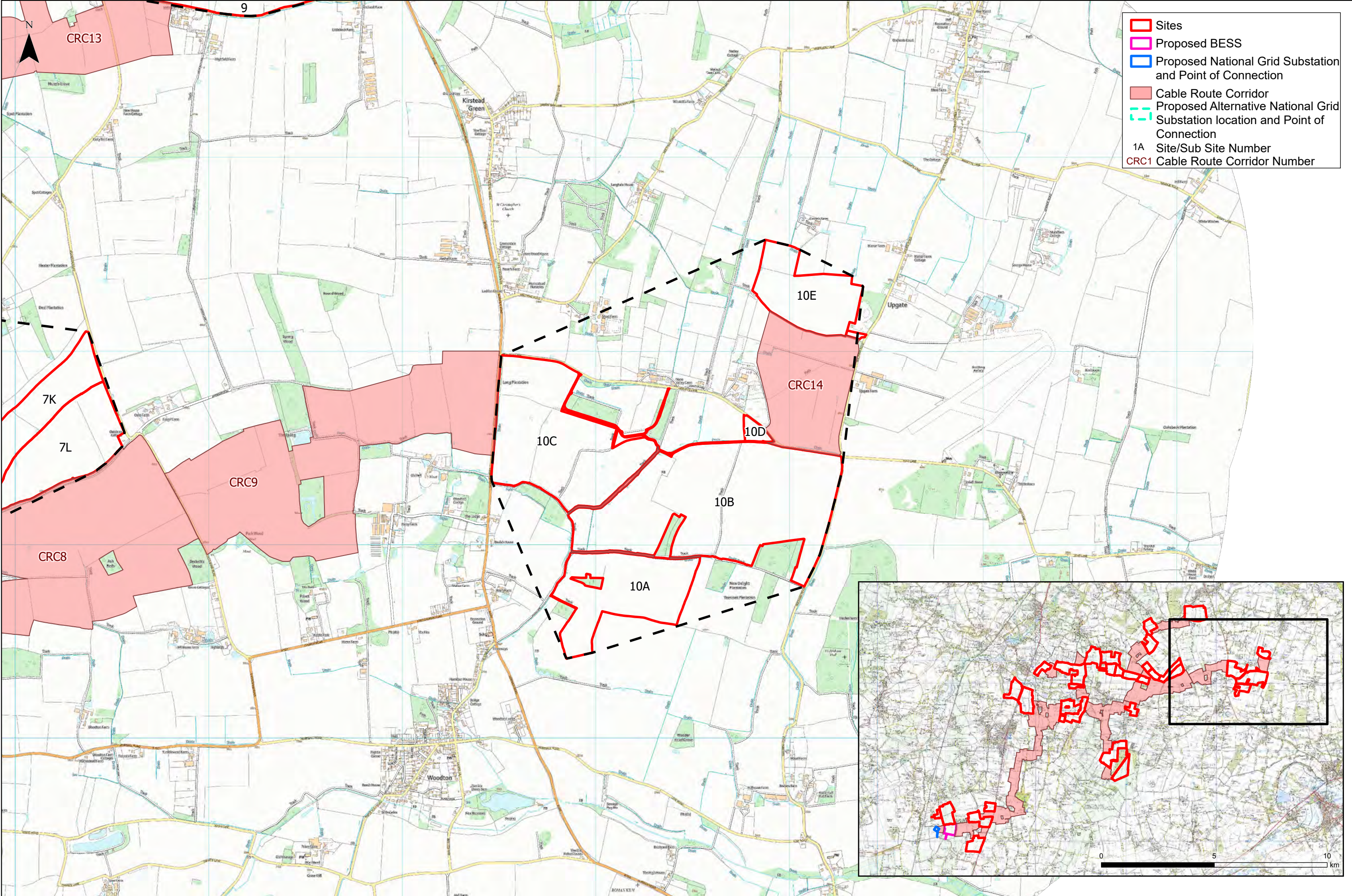






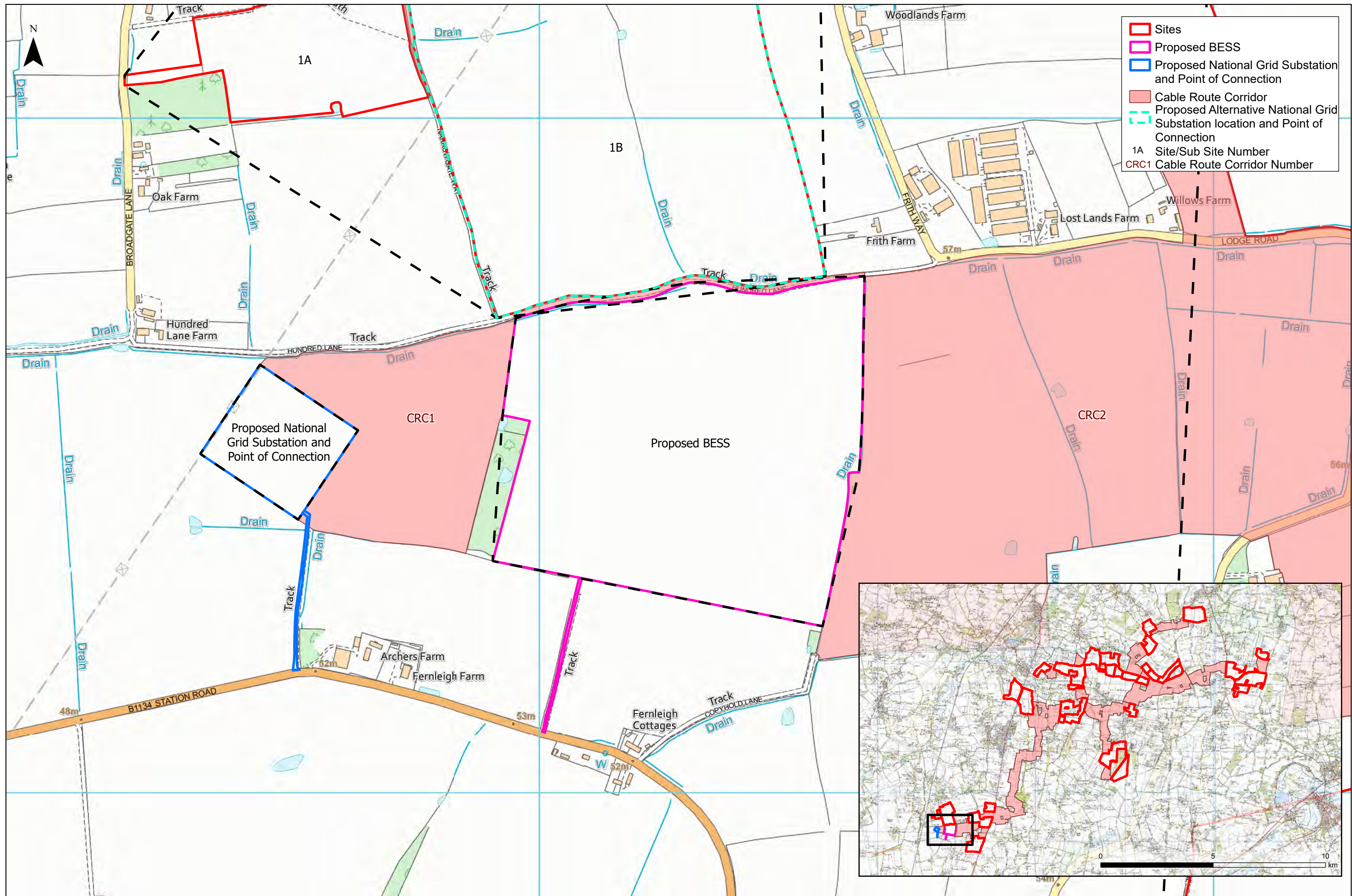




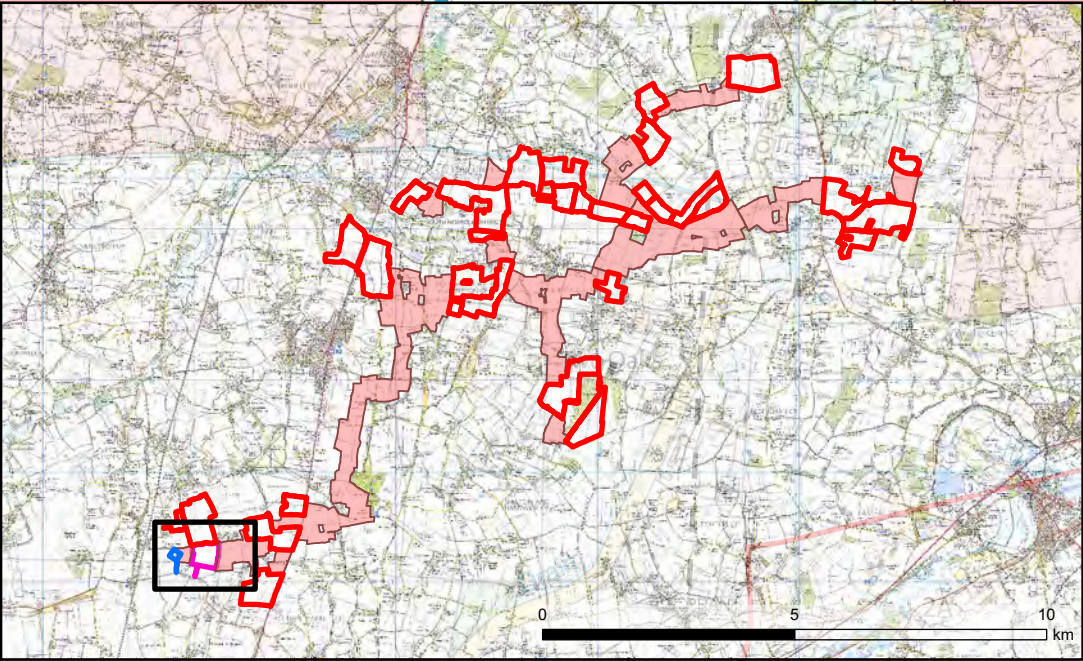


- Sites
- Proposed BESS
- Proposed National Grid Substation and Point of Connection
- Cable Route Corridor
- Proposed Alternative National Grid Substation location and Point of Connection
- 1A Site/Sub Site Number
- CRC1 Cable Route Corridor Number





- Sites
- Proposed BESS
- Proposed National Grid Substation and Point of Connection
- Cable Route Corridor
- Proposed Alternative National Grid Substation location and Point of Connection
- 1A Site/Sub Site Number
- CRC1 Cable Route Corridor Number



East Pye  
SOLAR



EAST PYE SOLAR  
Site Location Plan: BESS

0 250 500  
m

© Crown copyright and database rights [year of supply or date of publication] Ordnance Survey AC0000808122

1:5,000 @ A3 Date: 13/01/2025

Figure: 1.2 Sheet 12 of 13 Rev: 0



